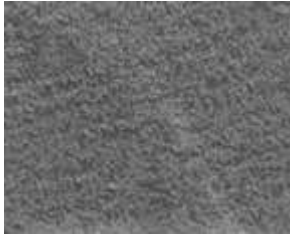


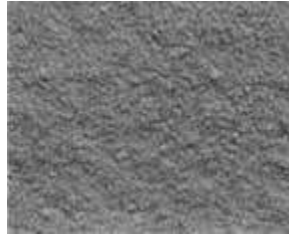
## Concrete Surface Profile CPS – Visual Scale

Concrete Surface Preparation for Coatings  
CSP-2

CSP-1

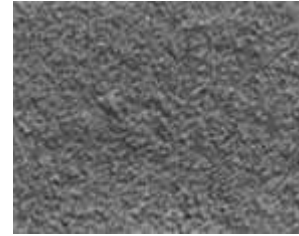


Acid Etched



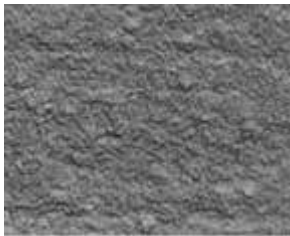
Grinding

CSP-3



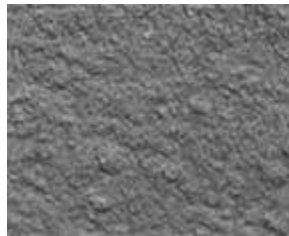
Light Abrasive Blast

CSP-4



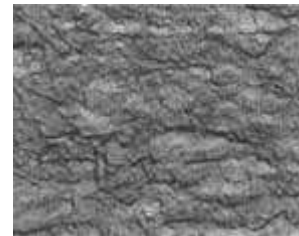
Medium Blast

CSP-5



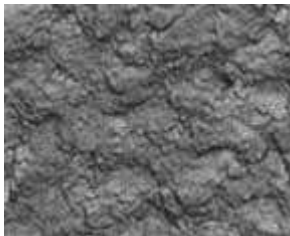
Medium/Heavy Blast

CSP-6



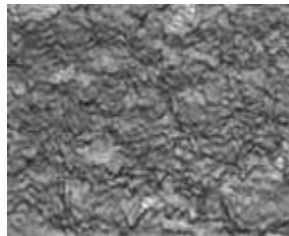
Heavy Blast

CSP-7



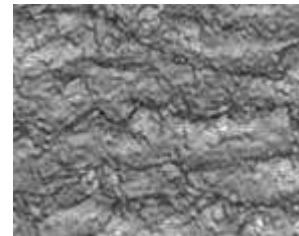
Heavy Shotblast

CSP-8



Extreme Shotblast

CSP-9



Extreme Shotblast

**The International Concrete Repair Institute (ICRI) has created a technical guideline #03732, “Selecting and specifying concrete surface preparation for sealers, coatings, and polymer overlays.” This guideline provides concrete surface profiles of CSP 3 to 9 which are used under the following conditions.**

- For coating applications from 4–5 mils in thickness, the surface profile shall be a CSP 3. This is known as a light shotblast.
- For coating applications from 15–50 mils in thickness, the surface profile shall be a CSP 4 or 5. This is known as a medium shotblast.
- For coating applications from 40 mils to 1/8" in thickness, the surface profile shall be a CSP 5 or 6. This is known as a medium-heavy shotblast.
- For topping applications from 1/4" to 1/2", the surface profile shall be a CSP 6 or 7. This is known as a heavy shotblast.
- For concrete overlays greater than 1/2", the surface profile shall be a CSP 8 or 9. This is known as an extreme shotblast.